



JANUARY/FEBRUARY 2026

**FEATURED
SUPPLIERS**

TIMKEN

Niterra

NEW 300W HEAT MAGNET®
3400021

119.²⁸



PHILLIPS & TEMRO
industries

Provide quick and easy starts for your vehicle and equipment even in the coldest weather. Designed to provide more power with the same reliable warming you expect from the Heat-Magnet® line. The 300 watts provides a higher wattage density, meaning quick heating times and backed with the safety of a built-in thermostat.

Note: This product will not exceed 266°F (130°C).

Applications

- Heavy duty trucks
- Agriculture
- Industrial
- ATV/UTV/Skid-steer
- Pipe warming

Specifications

- 300 watt
- 120 Volt AC
- 6-foot power cord



PowerPlastic 4Lights® Plastic Polish

08808

Quickly and easily polishes and protects a wide variety of hard or flexible clear plastics. Oxidation-inhibiting polymers, UV shields and an ultra-fine polish clean and clarify, preventing premature yellowing and aging.

9.⁷²

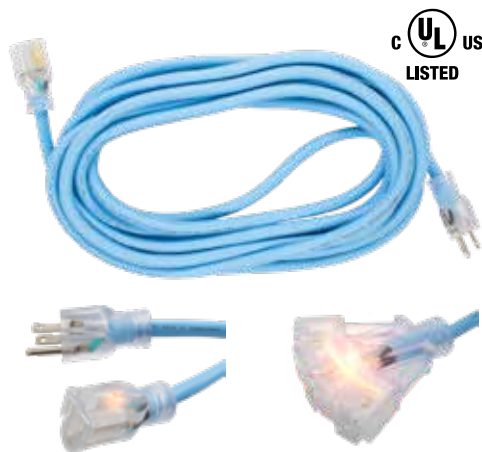


Car Carpet & Upholstery Cleaner
35424

Effectively tackles even the toughest stains, dirt, and debris in your car's interior. Its versatile formula works seamlessly across multiple surfaces, ensuring a spotless clean without damaging fabrics. This cleaner helps restore your car's interior to a refreshed, like-new condition, making it a reliable solution for maintaining a pristine vehicle.

9.⁷²

MOTHERS
Polishes • Waxes • Cleaners



Cold Weather Extension Cords

PART #	# OF TAPS	LENGTH	GA	
8771-31	1	25'	12/3	53.²⁰
8772-31	1	50'	12/3	104.¹³
8775-31	3	2'	12/3	11.⁴⁰
8781-31	1	25'	14/3	34.⁹⁶
8782-31	1	50'	14/3	68.⁴⁰



Cold Weather Extension Cords are designed for Canadian winters. They offer enhanced flexibility in heat and extreme cold weather or low humidity applications.



A true cold weather cable tie. More UV resistant than our standard natural ties. Enhanced flexibility in heat and extreme cold weather or low humidity applications. Material rated at -40°C per ISO 180. Tested for application performance at -20°C. Made with a special additive that prevents the tie from drying and breaking in cold, low humidity environments. The very best cold weather ties we offer!



Performance ICE Cable Ties

PART #	LENGTH	TENSILE STRENGTH	
7395-36	7.6"	50LB	10.⁷⁷
7396-36	11"	50LB	14.⁹³
7397-36	14.6"	50LB	17.⁰⁰
7398-36	15"	120LB	35.⁴⁹

Circulation Heater 2204037

The Series 41 tank heater provides dependable engine start by circulating warmed coolant through the engine.

Thermostat Range: Opens at 190°F (88°C) Closes at 150°F (66°C)

Product Dimensions: 2 3/4" x 8 1/2" (7 x 22 cm)

Cord Length: 5' (1.5m)

120 Volts | 1500 Watts | 12.5 Amps

219.³¹

PHILLIPS & TEMRO
industries



Roadside Safety Tool Kit **27.⁹⁶**

W1556

Contents:

- 8 ft Jumper Cables
- Flashlight
- Pencil
- Tire Gauge
- Knit Gloves
- Whistle
- 10pc Fuse and Terminal Kit
- 6 in. Slip Joint Pliers
- #2 Phillips Screwdriver
- 1/4 in. Slotted Screwdriver
- Electrical Tape
- 2AA Batteries

9 1/4 in. Drive Sockets: 1/4, 5/16, 3/8, 7/16 in., 4, 6, 8, 10, 12mm, 1/4 in. Drive Spinner Handle



Ice Scraper
W9197
2.²⁹



24" Snow Brush/Ice Scraper
W1461
8.³⁹



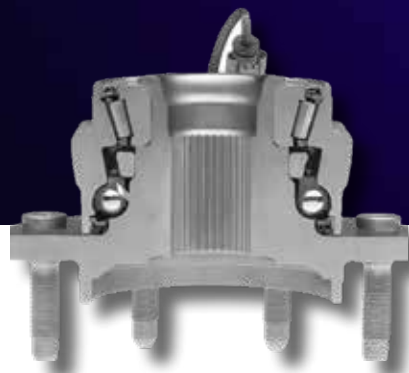
70+LM Pocket Penlight
W2356
8.¹⁶

SKF

NOW AVAILABLE

SKF Portfolio of Advanced Solutions Optimize Vehicle Performance

SKF offers a premium range of customized bearings, seals and related products and services for wheel-end, driveline, engine, suspension and steering applications to manufacturers of cars, light-medium- and heavy-duty trucks, trailers, buses, and two-wheelers.



ASK US ABOUT THE FULL SELECTION AVAILABLE!



Emissions Clear™

20715

473ml

Fuel & exhaust system cleaner

19.⁴⁶

Key Benefits

- Helps reduce harmful vehicle exhaust emissions and improve engine performance
- Cleans entire fuel delivery system to reduce particulate matter sent to the catalytic converter - helping to prolong its life and improve engine efficiency
- Effectively removes carbon deposits from the engine and emissions system to ensure optimal combustion, longer engine life, and optimized emissions catalyst efficiency
- Contributes to long-term engine health, reducing the need for costly repairs and maintenance



Heavy Duty Oil Stabilizer

20001

15.⁷⁸



Fuel Stabilizer

20302

473ml

7.⁸⁹



WD-40® MULTI-USE PRODUCT

WD-40 Multi-Use Product protects metal from rust and corrosion, penetrates stuck parts, displaces moisture and lubricates almost anything.

WD-40® Multi -Use Product - Problem Solved. Job Done Right™



WD-40® MULTI-USE PRODUCT LUBRICANT W/SMART STRAW 325G

01272

- Never lose the straw again®
- Flip straw up for stream and down to spray
- Toolkit friendly
- Safety lock prevents accidental discharge

9.²⁹



WD-40® MULTI-USE PRODUCT LUBRICANT 3.785L

01110

43.²⁹



WD-40® CONTACT CLEANER SMART STRAW 155G

01288

- Blast away oil, dirt, flux residue and condensation from sensitive electronics and equipment.
- Our solvent blend is safe on most plastics and metal parts. Test on plastic before using and avoid adhesives, device screens and keyboards.

6.²⁰



WHITE LITHIUM GREASE SMART STRAW 283G

01285

- Withstands 1.5x more pressure than the competition for less frequent reapplications and reduced downtime
- Leaves behind a rust-inhibiting barrier for protection against corrosion
- Effective in a temperature range from -18° C to 149° C

9.⁶⁰



DRY LUBE SMART STRAW 283G

01284

- Quick drying formula is ideal for reducing friction and wear
- Resist dirt, dust and oil
- Ideal for releasing moulded parts

9.⁹⁹



Eze-Slide
331 - 170g

15.²¹

**Kleen
-flo**



Garbage Bags

PART #	SIZE	STRENGTH	QTY	
275401B	22X24	REGULAR	500	30.⁷⁵
278101B	26X36	XSTRONG	125	24.⁸²
278301B	30X38	XSTRONG	125	30.⁰⁵
278501B	35X50	XSTRONG	100	35.⁹⁵
278701B	42X48	XSTRONG	75	33.⁷²
038001	35X50	ULTRA TOUGH	50	50.²⁰

Bestbuy Stocks Top 12 Ultimax belt part numbers!



Everything about an Ultimax® belt is designed to deliver superior performance and dependability... and now **simplicity!**

"Yes! We have your belt!" AND, the complete offering of Ultimax performance belts is just an order away!

ULTIMAX PERFORMANCE BELTS

ULTIMAX BELTS FIT MOST TOP-SELLING MACHINES*

Top Selling Machines	Ultimax Belts Part Number	Application
1	UA446	Can-Am Commander, Outlander, Renegade and Maverick
2	UA441	Polaris RZR 900, 1000
3	UA412	Polaris many older models
4	UA450	Kawasaki Prairie, Teryx, and Brute Force 750
5	UA424	Polaris 700, 800
6	UA426	Polaris 450, 500, 570
7	UA413	Polaris models with EBS
8	UA459	Arctic Cat 400, 450, 500
9	UA401	Arctic Cat / Suzuki 500
10	UA422	Yamaha Grizzly and Rhino
11	UXP480	Polaris RZR XP Turbo
12	UXP488	Can-Am Maverick X3 Turbo

* Based on available sales data

Ultimax Belts Benefits:

- Provide performance quality replacement belts for the most common ATVs, UTVs & Side-by-Sides
- Each belt is designed for a specific application – No "one size fits all" approach
- Engineered with the same expertise that goes into an OE belt
- Built to handle more load and abuse than the typical OE drive belt
- Ultimax UA and XP belts are backed by a two- or three-year warranty and the easiest online warranty process** in the industry
- Ultimax belts are made in the USA

** Full warranty details can be found at www.ultimaxbelts.com/warranty.

ULTIMAX BELTS ARE DESIGNED FOR THE RIDER
WHO REFUSES TO SETTLE FOR SECOND BEST,
AND THE DEALER WHO WANTS TO KEEP THOSE RIDERS HAPPY!

Ultimax Belts Extras:

Belt-Finder, Belt Installation Videos, Social Media, Newsletter

Ultimax belts are designed to be application specific, so check out our "Belt Finder" tool to select the right Ultimax belt for your machine. Visit <http://www.ultimaxbelts.com/belt-finder> or scan the QR code to the right. Then, simply choose the make, year and model of your machine from the drop down options provided, and you'll find the perfect fit.

For installation tips check out our "How-to" videos at www.youtube.com/UltimaxBelts.



ULTIMAX BELT-FINDER

TIMKEN

Stronger. By Design.





40 P Dual-Voltage Plasma Cutter

440

- Cutting Capacity: Up to 5/8" Clean Cut & 3/4" Sever Cut
- Dual Voltage Input: 120V & 240V
- Output Range: Up to 40A
- Complete with 20' IPT 40 Plasma torch, 15' Ground Cable & Clamp, 15' Power Cord, Spare Consumables

FOR USE ON

- Mild Steel, Stainless Steel, Copper and Aluminum (3/16") with Ease!
- Drag Torch Technology, for Smooth Consistent Clean Cuts
- Warranty: 3 Year, Front to Back

2159.⁶⁷



140 MIG Welder, 120V

309

EASY TO USE

- Euro connect torch with Tweco® style consumables
- Fast disconnect to swap out torch, clean liner
- 10ft MIG gunWarranty: 3 Year, Front to Back

APPLICATIONS

- DIY
- Metal Fabrication
- Maintenance & Repair
- Farm & Ranch
- Automotive

1013.⁰⁴



Q.A.P. Synthetic

946ml

0W20 FX0004606

5W30 FX0004706

0W16 FX0004806

6.³⁰



Q.A.P. Synthetic

5L

0W20 FX0004630

5W30 FX0004730

0W16 FX0004830

30.⁵³

30.⁰¹

28.⁶¹



Q.A.P. Conventional

5L

5W30 FX0004230

26.⁶⁸

**Quality
AUTOMOTIVE
Products™**

GF6 OIL BLOW OUT- WHILE SUPPLIES LAST



DEX-COOL® by PRESTONE Extended Life Antifreeze/ Coolant

71118
Concentrate

21.¹²

71159
50/50

14.⁹⁵



PRESTONE COMMAND® HEAVY DUTY EXTENDED LIFE (ELC) ANTIFREEZE/COOLANT

74047
Concentrate

19.⁸⁹

74055X52
50/50

12.⁷⁹

Prestone®



Gorilla Black Tape

105629

Gorilla Tape is 3X stronger* for a hold that lasts.

14.⁷⁵



Gorilla Black Tape Tough and Wide

106425

2.88-in x 25-Yards Heavy Duty Duct Tape

18.³⁶



Super Glue

112381

15g

Its high strength and quick set time make Gorilla Super Glue the go-to for a variety of household projects.

4.⁴⁴



Epoxy

4200602

25ml

- DRIES CLEAR: Ideal for clean, easy finishing
- 5 MINUTE SET: Plenty of re-positioning time for the perfect fit.
- GAP-FILLING: Fills voids and bonds uneven and vertical surfaces.

7.⁹⁵



Gorilla Tough & Clear Mounting Tape

6065102

1x60"

Gorilla Tough & Clear Mounting Tape is a clear double-sided tape that mounts in an instant, for a long-lasting, weatherproof bond.

7.²⁰



Gorilla Clear Repair

6127002

8.2m

CRYSTAL CLEAR: Non-yellowing even outdoors; notched edge design makes tape easy to tear by hand

ALL PURPOSE: This heavy duty tape works wherever the work is; indoor and out, rain or shine

10.⁷⁰



O'Keeffe's® Working Hands® Hand Cream

K1350001

Concentrated hand cream

that heals, relieves and repairs extremely dry, cracked hands.

11.⁵⁶

O'KEEFFE'S



Spray Adhesive

6341502

14oz

Gorilla Spray Adhesive forms a clear, permanent bond that is moisture resistant and can be used on projects both indoors and out.

15.⁹⁵



BOSCH SNOW DRIVER™

Tested to perform at -29°C

16SD

17SD

18SD

19SD

8.⁰²

20SD

21SD

22SD

24SD

26SD

28SD

9.¹⁴

10.⁹⁹

10% OFF



BOSCH

Invented for life



The full line of NGK Ignition Coils is **now available** through Bestbuy

COILS & PLUGS A DYNAMIC DUO



Spark plugs don't run alone. So NGK applied its expertise in ignition technology to make a better coil. Engineered to OE durability and performance, NGK continues to test and validate for easier installation and better performance.

Learn more at ngksparkplugs.ca

© Niterra Canada Limited. All trademarks are the property of their respective owner. All rights reserved.

Niterra



Kindersley Bearing (2008) Ltd.

500 12th Avenue East, Kindersley, Saskatchewan | (306) 463-2005

Disclaimer: Products may not be available at all locations and may not be exactly as shown. Minimum purchase may be required. Flyer pricing is not guaranteed. Price and availability may vary from store to store. Please inquire at your local Bestbuy Jobber.